

IT'S ALL ABOUT THE GERMAN COCKROACH



German cockroaches can be found nearly everywhere, infesting any structure that provides them with a food source.

A single pair of cockroaches can quickly grow into millions.

They have an average of

30
offspring

and take about
60 days to develop.



Immature cockroaches spend an estimated

90% of their
time in hiding.

This makes finding their locations tricky. Also, they are mostly nocturnal so daytime inspections often don't catch them.



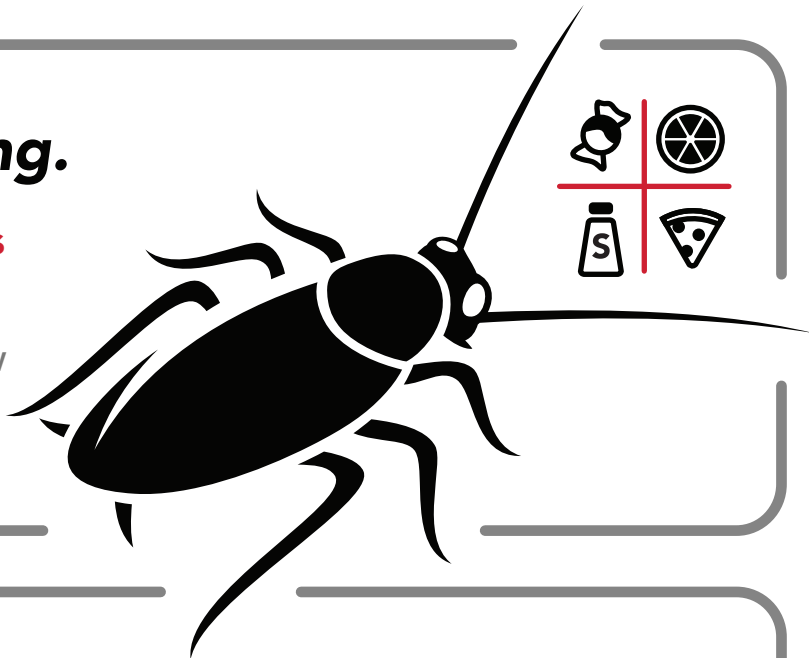
About 80% of the population is nymphs.

Only 20% of the population is adults. Since most of the nymphs hide most of the time...populations can go undetected until they are severe.

They will eat nearly anything.

Sweets, carbohydrates, fats, proteins: it's all on the menu for German cockroaches.

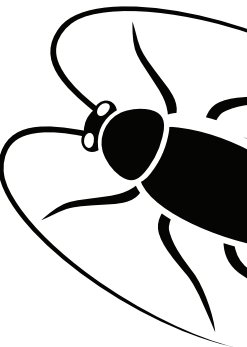
Make sure to rotate baits so they get a new active ingredient AND a new bait "taste".



You have to use enough bait.

Because so many are hiding, it's impossible to truly estimate the population. However, monitoring can help and you may need to use up to a full tube of bait (or more!).

Number of Cockroaches	Recommended Amounts
1 - 50	7.5 - 8.75 grams
50 - 100	15 - 16.5 grams
100 - 499	30 - 33 grams



They like small spaces: inside equipment, in wall voids, underneath boxes, and any other small, tight space.

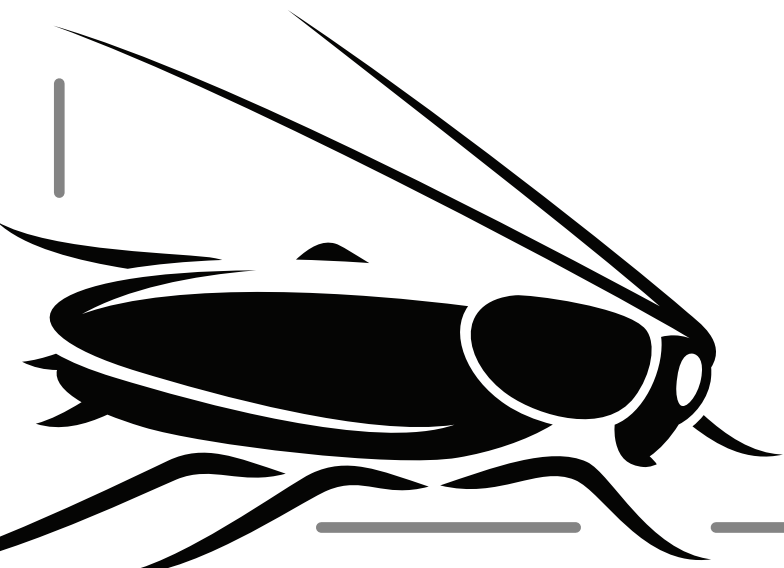
Using a small, dark monitor like the **EZ Conceal** helps catch more because it is designed with their needs in mind.



You MUST monitor.

If monitors aren't used, it's impossible to tell where the populations are located (hot spots), how many there are (pop. increasing or decreasing), and if treatments are effective.

Place monitors in key areas to help know where to bait and where sanitation issues may be persisting.



vmproducts.com

When using insecticides, always read and follow all label precautions and directions

